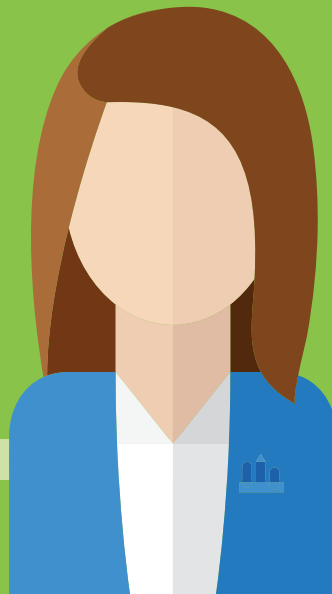


Plan in advance ...
you won't have time
when a fire breaks out



Do not overload sockets.

Report frayed electrical cables, don't try to repair them yourself.

Familiarise yourself with escape routes and assembly points.

If you discover a fire, activate the nearest fire alarm.

Only use a fire extinguisher if you have been trained to do so.

If you have not been trained leave the building immediately.

Report to your assembly point and advise on the fire situation.